



**BUZZ ON UP TO OUR BOUTIQUE PHOTO POD STUDIO -
DEVELOPED WITH YOUR IMAGINATION IN MIND.**

Terms and Conditions:

- Pricing excludes VAT
- Bookings must be made at least 72-hours ahead of the shoot.
- Full payment is required to secure your booking. Proof of payment to be sent to Candice@room206.co.za
- Payments are to be made into the following account:

ACC Name : Room 206 Targeted Writing and Media

ACC #: 62393116902

Bank: First National Bank

Branch: Karaglen

Branch code: 252 442

ROOM 206 (PTY) LTD

REG: 2012/179444/O7

VAT: 4640284305

ADDRESS: Unit 1 Laura Court Cnr 4th Ave and 13th Street
Parkhurst, 2193

- Maximum capacity of 10 people.
- Any damages made by client to the 206 Pop-Up Studio and/or equipment will be paid in full by the client.
- Set-up of backdrop and lighting included in cost.
- Studio hire price does not include an overtime fee.

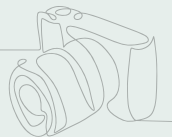




**BUZZ ON UP TO OUR BOUTIQUE PHOTO POD STUDIO -
DEVELOPED WITH YOUR IMAGINATION IN MIND.**

Terms and Conditions:

- Studio and equipment must be left the way it was found, please!
- The second room in our chic studio is open as a locker room, including a mirror and hanging space for clothing.
- Bathroom and kitchen facilities are provided.
- Free WI-FI available.
- When you book your studio time, please be aware that we do not have a generator available in the event of loadshedding. However, you are welcome to re-schedule your shoot at the availability of the space and the team if we lose power unexpectedly!
- Props provided upon request.
- Room 206 (PTY) Ltd is not responsible for any noise disturbances, studio damages, negligence, theft, loadshedding and/or acts of God that may hinder the progress or shoot day of the rental client.





Frequently Asked Questions:

- **How big is the studio?**

Room one – 30SQM

- **Can sets be built in studio?**

Yes, absolutely! Your creativity can run freely in our space, as long as your equipment can fit up the stairs!

- **Is the studio soundproofed?**

Unfortunately, our studio is not soundproof.

- **Is there natural light?**

There is a lot of lovely natural light in our studios from the windows leading onto the breather balcony, and professional studio lighting is also provided.

- **What are the opening hours of the studio?**

You can buzz on up to our well-maintained space from 9AM to 5PM.

- **What are your weekend rates?**

We are open for shots Mondays, Wednesdays and Fridays. If you'd like to make a special request for weekend usage, please contact us directly!

- **Are there bathroom and kitchen facilities?**

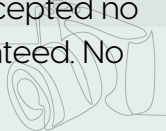
Yes, you will have full access to bathroom and kitchen facilities, including a kettle to keep the caffeine buzz going and a balcony to enjoy it on!

- **Is there parking available?**

There is ample street parking available near the building.

- **What is the cancellation policy?**

We request that you book 72 hours (3 days) in advance with a 50% commitment deposit. Cancellations or postponements are accepted no later than 48 hours prior to bookings, with a full refund guaranteed. No refunds for no-shows, your booking will be forfeited.





Frequently Asked Questions:

- **What is your payment process?**

Once you have completed your booking form and emailed this to Room 206, you will receive a booking invoice. The full amount must be paid prior to rental day to: ROOM 206 (PTY) Ltd. Please use your Full name / Company name as booking ref.

- **Is there an overtime fee?**

We charge R300 per additional hour for overtime.

- **Is there a generator?**

Not yet! However, there is still natural light to shoot by.

- **What is the studio's policy on food and drink?**

The breather balcony and locker room is available for rest between shots, but we ask that you please keep the equipment space free of all food and drinks.

- **What is the studio's policy on smoking?**

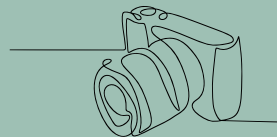
No smoking in the studio or on the balcony, but you are more than welcome to smoke on the balcony outside (with a view!)

- **Is there easy access to the studio?**

Access to the studio is via the stairwell to the first floor, so keep this in mind when considering bringing large equipment/props to set!

**Reach out if you have any
buzzing questions!**

Office: 010 900 3056
jamie@room206.co.za



Need help with writing up your content? [Let's collaborate](#)